

The Cell & Inheritance Review

Name: _____

Date: _____

Score: _____

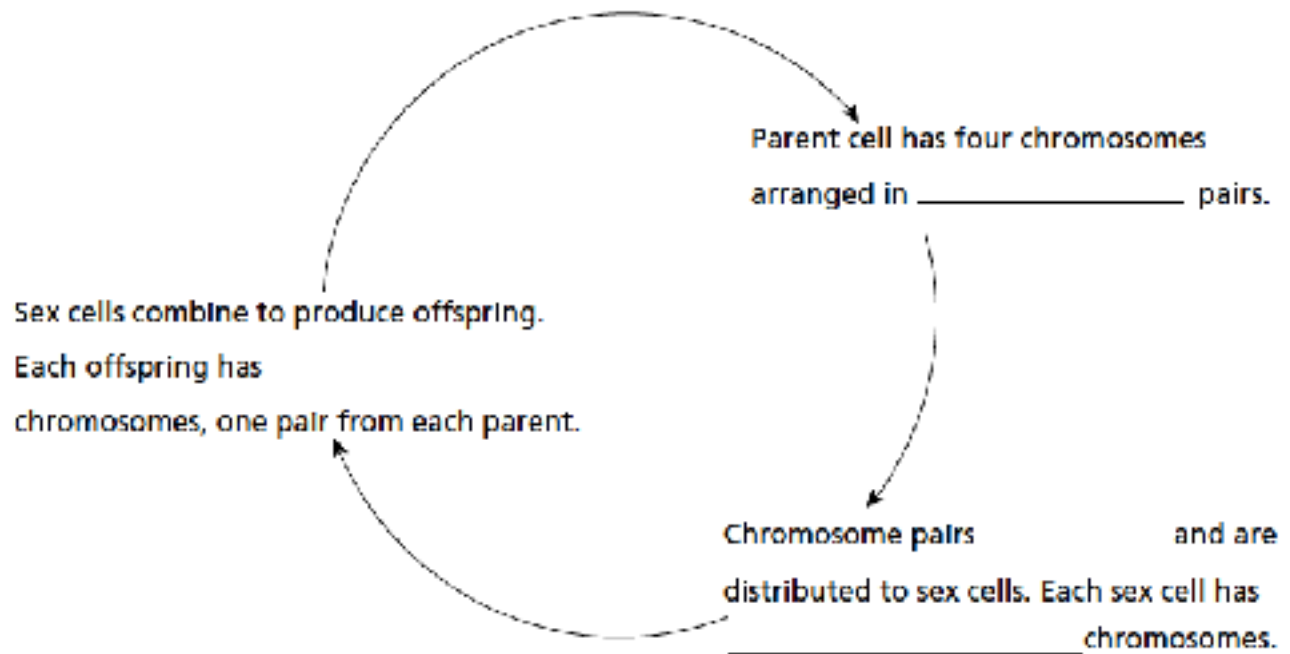
1. Complete the table below by filling in the spaces with the correct stage of meiosis—Beginning, Meiosis I, Meiosis II, End.

Event	Stage in Meiosis
The double-stranded chromosomes move to the center of the cell. The centromeres separate.	1. _____
Two cells form, each with half the number of chromosomes. Each chromosome still has two chromatids.	2. _____
Four sex cells form with half the number of chromosomes as the parental cells.	3. _____
The chromosomes are copied.	4. _____

2. What is the chromosome theory of inheritance?

3. Why is it important that sex cells have half the number of chromosomes as body cells?

4. Complete the cycle diagram, which describes the events that occur during meiosis.



5. Compare Mitosis & Meiosis in 3 ways.

6. Contrast Mitosis & Meiosis in 3 ways.